



2025
ANNUAL REPORT

GOOD THINGS
***GROW* HERE**



Table of Contents

Introduction & CEO Letter	1
Our Ways of Working in the World	3
Philanthropy, Grantmaking, & Scholarships	4
Grantee Spotlights	8
Sponsorship Impact	10
Connect Mat-Su	12
R.O.C.K. Mat-Su	14
Policy & Advocacy	16
Evaluation & Learning	17
Community Engagement	18
Grants Awarded	20
Financials	22
Looking Ahead	23



A Message from the CEO

Esther Pitts, PRESIDENT AND CEO

What a year it's been! 2025 brought meaningful change, renewed energy, and opportunities for creative solutions that move us closer to our mission to improve health for all Mat-Su residents. Stepping into the CEO role this year, I was excited to lead an organization deeply committed to long-term impact and a healthier community. Looking back, I see steady progress fueled by strong partnerships, bold ideas, and community-driven action.

In 2025, with intention, we deepened our connection with the people we serve. We hosted our first-ever Community Choice Health Summit, bringing together Houston and Big Lake residents who, in a single day, selected two health initiatives to focus on for the next year. We also completed our fifth Community Health Needs Assessment (CHNA), informed by input from more than 1,000 Mat-Su residents. The CHNA continues to ground our work in what matters most locally.

We also strengthened our commitment to accessible learning. Our Evaluation and Learning team launched Mat-Su Measures, a free, public data dashboard providing data from more than 50 reliable sources. By expanding access to local health data, we're empowering community leaders to make smarter decisions in policy, grant applications, and local investments to advance community health.

Listening closely also means responding when it matters most. During the November 2025 government shutdown, thousands of Mat-Su residents experienced delays in SNAP and WIC benefits, as well as government furloughs. To meet this urgent need, we partnered with trusted local organizations working toward food security and granted \$250,000 to six grantees to expand pantry services and reach more families at a critical moment.

Amid a year of change, one of my personal priorities was building a strong executive team poised for long-term leadership. In 2025, we welcomed a new CCO, CAO, and CCIO, joining our CFO and me. Together, this team is united by a shared vision for a healthier Mat-Su and guided by three key principles: Clarity, Accountability, and Impact.

One of our most impactful milestones this year was supporting Mat-Su Regional Medical Center and Community Health Systems to submit a Certificate of Need for a freestanding behavioral health hospital. For over a decade, access to local behavioral healthcare has risen to the top of community health priorities. This hospital represents hope, bringing care closer to home and offering a safe, supportive place for those navigating complex recovery journeys.

So much was accomplished in 2025, and there is still more good ahead. This year is proof that when we work with our community partners, lasting impact is possible. Here's to continuing that work together and growing more good things in the Mat-Su.

Sincerely,

Esther Pitts, PRESIDENT AND CEO

Supporting the Mat-Su Since 1948

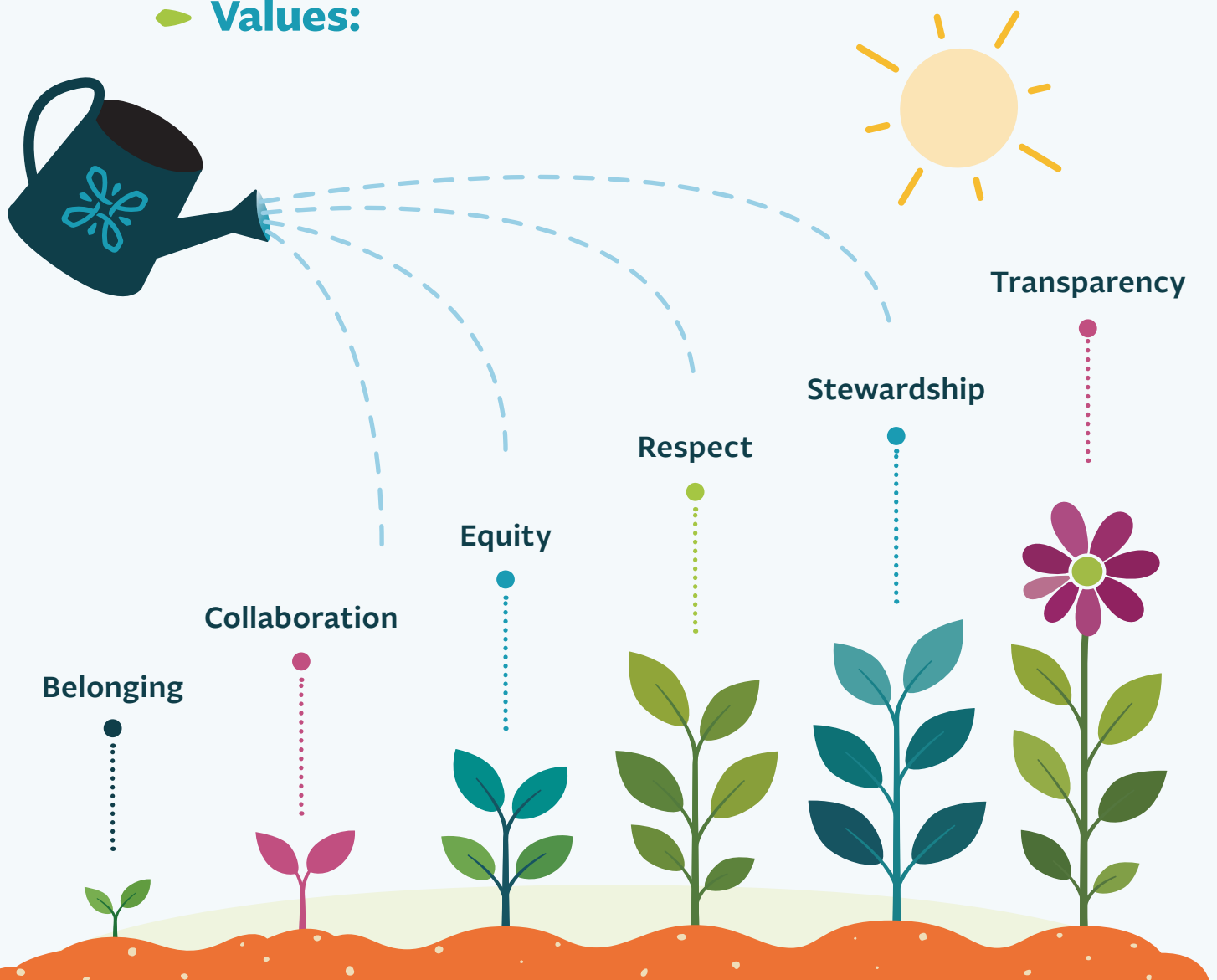
► Mission:

To improve the health and wellness of Alaskans living in the Mat-Su.

► Vision:

A community where all persons have the opportunity for a healthy life.

► Values:



Our Ways of Working in the World

We are guided by a comprehensive approach that combines funding, community engagement, policy reform, and data to create lasting improvements in community health and well-being.

Our Funding

We invest in organizations and initiatives that address the most pressing health and social needs in the Mat-Su.

Research & Evaluation

We use data and evaluation to guide strategy, measure impact, and continuously improve our work.

Policy & Advocacy

We collaborate with policymakers and key stakeholders to strengthen systems, reduce barriers, and improve access to services.

Community Engagement

We work alongside partners and residents to ensure solutions are informed by lived experience and community priorities.



Did you know?

We generate funds for reinvestment in the community through our joint venture (JV) with Mat-Su Regional Medical Center. A portion of hospital revenue comes to us and funds grants, scholarships, sponsorships, and other health-focused initiatives to improve health outcomes for all Mat-Su residents! This JV structure is unique to us, and we are **one of four organizations in the US** with this extraordinary operating relationship.



Philanthropy & Grantmaking

In 2025, we continued to support organizations and initiatives that strengthen health and well-being across the region. Through strategic grantmaking and scholarships, we supported partners working to address urgent needs, build long-term stability, and expand opportunities for Mat-Su residents.

This work spanned a range of focus areas, from children and families to food security and access to healthcare, ensuring that investments addressed both current challenges and future goals.

Not only was 2025 our largest year for grantmaking, but we also continued to focus on larger systems-level change while still being responsive to community need. Our philanthropic team supported grantees with technical assistance, operating and strategic grants, and responsive grants to ensure residents have access to the resources they need to live their healthiest lives.



Stats

\$21.7M
in grantmaking

238
grants approved

294
applications received



Check out page 20 for a comprehensive list of our grants awarded!

Scholarships to Support Healthcare and Human Services Careers

In our largest scholarship year to date, we were proud to award 750 scholarships and professional development funds to support students and working professionals pursuing careers in healthcare and human services-related fields.

This included 489 academic scholarships, 184 vocational scholarships, and 77 professional development and training awards. Together, these investments help reduce financial barriers to education, strengthen Alaska's workforce, and expand access to careers that directly support the health and well-being of Mat-Su residents.



Stats

489

Academic Scholarships

184

Vocational Scholarships

77

Professional Development & Training Awards

\$3.1M

in scholarships

80%

of academic scholarship awards stayed in state, meaning these funds go directly to our local institutions.



FEATURE STORY

Food Security

Supporting Food Security Through Emergency Response Funding

In direct response to SNAP benefits being cut during the government shutdown, we distributed \$250,000 in rapid-turnaround emergency response grants. This funding addressed disruptions stemming from SNAP processing delays, application backlogs, and broader economic impacts on local households.




“

Meeting this moment alongside local organizations that provide basic needs support truly exemplifies our mission for better health.

Vandana Ingle
CCIO

”

We distributed funding to six partner organizations providing direct food and health-related assistance, including the Mat-Su Food Bank, Palmer Food Bank, Sunshine Community Health Center, Blood-n-Fire Ministries, Mat-Su Health Services, and Frontline Mission. Together with these organizations, we worked to ensure individuals and families had the support they needed when other resources became unpredictable.

Food insecurity remains a growing concern in the Mat-Su region. Our investment helped strengthen the region's food security network and expand access to essential resources for residents most impacted by delays in federal support programs. 



“

Frontline Mission is extremely thankful for the Foundation’s funding support during this critical time.

These funds will allow us to provide additional support to individuals and families, as we have seen a significant increase in community members utilizing our services. We can purchase more food for our Hot Meal Program, enhance our food distribution center, which provides supplemental groceries, support our Thanksgiving dinner and Christmas food boxes for the upcoming holidays, and help feed children over the weekends and holiday breaks from school.

Matthew Sheets
EXECUTIVE DIRECTOR OF FRONTLINE MISSION

”





Grantee Spotlights

► Alaska Tilth Program



Improving access to fresh, healthy food is essential for families in the Mat-Su. A \$50,000 grant to Alaska Pacific University supports the operations and long-term sustainability of the Alaska Tilth program. This program connects local farms with community organizations working to fight hunger by purchasing produce, including surplus and “imperfect” items, and redistributing it to partners across the region. It also collects leftover farmers’ market produce, reducing waste while making sure nutritious food reaches those who need it most.

► Reconstruction of Palmer Public Library



A library is more than a building—it’s a cherished place where community comes together. The City of Palmer accepted a \$500,000 grant that will support the reconstruction of the Palmer Library. The new library is designed to be a welcoming, modern hub for connection, learning, and growth. It will feature flexible gathering and meeting rooms, outdoor spaces such as an amphitheater and reflection areas, all with accessibility and sustainability at the forefront. Whether for everyday use or times of need, a library serves as a cornerstone for the community.

► **Mat-Su Valley of Lifesavers**



American Heart Association.

When emergencies happen, knowing how to act can save a life. With support from a \$294,000 grant to the American Heart Association, MSHF supported a program called Mat-Su Valley of Lifesavers. This initiative incorporated hands-on CPR and first aid training so community members are more equipped to help administer life-saving support. Through trainings like these, youth sports safety programs, and increased access to tools, such as AEDs and infant CPR kits, this project is empowering residents of all ages with life-saving skills.

► **ADA-compliant Passenger Bus**



Access to transportation for medical appointments or pharmacy services is vital for seniors to stay healthy and independent. A \$76,848 grant for Wasilla Area Seniors, Inc. (WASI) supported the purchase of a new ADA-compliant passenger bus equipped with a wheelchair lift. This new bus provides safe, reliable, and affordable transportation so that seniors and adults with disabilities, especially those in underserved areas, can access essential services.



Sponsorship Impact

Supporting community events, celebrations, and gatherings through sponsorships increases opportunities for residents to build a strong sense of belonging, which can improve overall health.

We regularly sponsor community events that promote better health, provide safe spaces for gathering, engage community members in healthy activities, and uplift the impactful work happening in and around the Mat-Su.



115

SPONSORSHIPS

82

ORGANIZATIONS
SUPPORTED

\$250,431

AWARDED





FEATURE STORY

First Responders Day

We partnered with the Alaska State Fair to sponsor First Responders Day, investing \$15,000 to recognize and thank the police officers, firefighters, EMTs, and other emergency personnel who serve communities across Alaska.

Held during the 2025 Alaska State Fair, the event offered discounted admission for first responders and their families and featured activities and special programming throughout the fairgrounds. Through this sponsorship, we celebrated the individuals who play a critical role in protecting the health and safety of communities across the state.

This partnership reflects our broader commitment to supporting organizations and events that strengthen community connection, recognize local leadership, and contribute to the health and well-being of Mat-Su residents.

“

Every sponsorship, large or small, is an investment in community. Beyond making events possible, it helps create opportunities for people to gather, connect, celebrate, and work toward common goals. These shared experiences strengthen relationships, foster trust, and build the sense of belonging that is essential to a healthy, vibrant community.

Erin Messmer, CCO

”



Connect Mat-Su

Local Support For Local Needs

Connect Mat-Su is our comprehensive information and referral hub that helps residents access the services they need to live healthy and stable lives.

Connecting People and Services

Bob reached out to Connect Mat-Su for support with daily activities due to memory challenges. Our staff connected him with multiple service providers and coordinated follow-up support when needed. Through continued outreach and collaboration, Bob was able to successfully connect with services and receive the support he needed.

Where We Are Reaching

69%

Wasilla & Palmer

31%

Outlying communities

Who We Are Serving

52% Experience A Disability

19% Age 65+

10% Veterans

8% Alaska Native/
American Indian

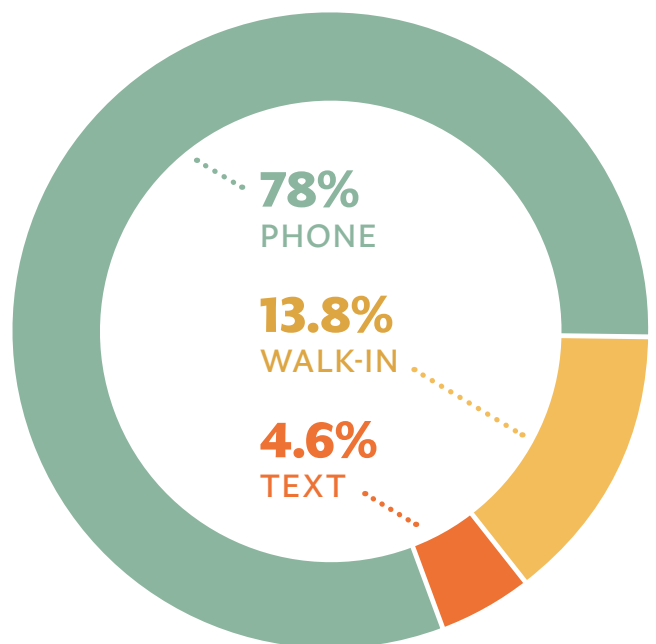


How Clients Contacted Us

78%
PHONE

13.8%
WALK-IN

4.6%
TEXT





What Our Clients Need



Housing



Health-related Resources



Food



Transportation

76%

of cases identified **more than one need**, underscoring the importance of a collaborative approach to service coordination and delivery.

Key Outcomes

77%

would recommend
Connect Mat-Su

78%

report **improved** quality of life

60%

got the **help** they needed

62%

better understand
available **resources**



R.O.C.K. Mat-Su

Raising Our Children with Kindness

Established in 2016, R.O.C.K. Mat-Su is a collaborative of community members, including individuals and organizations, joining together to promote family resilience and reduce child maltreatment.

Systems-Level Impact

Our work with R.O.C.K. Mat-Su shifts systems toward more family-centered, strengths-based approaches. Through training, collaboration, and community engagement, partners are improving communication, increasing accessibility, and strengthening long-term outcomes for children and families.

70+
collective impact
partners



ROCK's Initiatives

- ▶ Child Abuse Prevention Awareness
- ▶ Early Relational Health
- ▶ Child Sexual Abuse Prevention
- ▶ Family Contact Improvement Partnership
- ▶ Shared Community Learning





Stats

Family Contact Facilitator Training

Four full trainings were delivered, **reaching 30 participants** (20 non-professionals and 10 professionals).

Child Sexual Abuse Prevention Workgroup

Launched in **Q1** of 2025.

20 facilitators were trained in Darkness to Light’s Stewards of Children curriculum, which equips adults to prevent child sexual abuse.

Child Abuse Prevention Awareness

Hosted the 2nd annual Community Connection Carnival, which engaged **336 children/adults** (plus partner agency staff) and provided a safe, family-friendly space to connect with resources through a trauma-informed approach.

2025 Community Baby Showers

The baby showers aim to celebrate families, foster connection, and build parenting knowledge and skills.

Four events were held across the Mat-Su Valley.

497 participants attended, along with partner agency staff supporting the events.





Policy and Advocacy

Advocacy and public policy are important tools for creating lasting change. We work alongside community members, partners, and policymakers to shape policies and systems that promote health, economic mobility, and family well-being across the Mat-Su Borough.

Our advocacy priorities are grounded in community voice, data, and lived experience. In 2025, we focused on issues that directly impact health and opportunity, including housing and homelessness, early childhood systems, behavioral health, transportation, and health equity.

This work takes many forms, from legislative advocacy and cross-sector partnerships to public education, grantmaking, and research that informs policy decisions. By addressing the root causes of health challenges, we help create stronger systems and more equitable outcomes for Mat-Su residents.



2026 Advocacy Priorities

- Housing & Homelessness
- Childcare & Early Childhood Systems
- Behavioral Health & Substance Use
- Transportation & Economic Mobility
- Health Equity & Access



Scan to watch video



Evaluation & Learning

We consider ourselves a learning organization, both about our health landscape and how to better meet the needs of our residents.

Our evaluation and learning (E&L) team helps us understand community needs, measure progress, and identify opportunities to strengthen our work. By combining data, research, and continuous feedback, we support informed decision-making and ensure strategies are responsive to changing conditions across the Mat-Su.

Community Health Needs Assessment

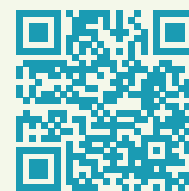
In 2025, this work included the Community Health Needs Assessment (CHNA), a comprehensive, community-informed report on the health and well-being of residents in the Matanuska-Susitna Borough. Completed every three years, MSHF and MSRMC partner with community members, service providers, public agencies, and nonprofit organizations to assess local health conditions and to identify top health priorities in the Mat-Su. The resulting assessment is used to guide future funding decisions and hospital service lines, as well as referenced by grantees, partners, and others to provide context for life and health in the Mat-Su.



[Read the full report](#)

Regional Data at Your Fingertips

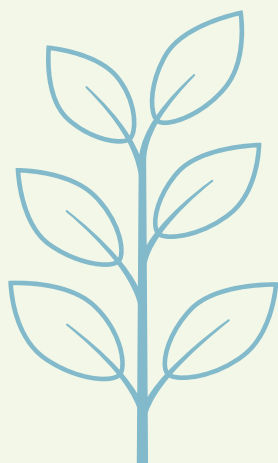
Recognizing the need for Mat-Su-specific health data, E&L launched Mat-Su Measures, a public dashboard that brings together health-related data from more than 50 sources. Together, these tools help identify shared priorities, improve access to community data, and support nonprofits, policymakers, and residents in making informed decisions.



[Experience Mat-Su Measures](#)

Key Areas of Focus

- ▶ Support strategy and learning
- ▶ Measure and communicate impact
- ▶ Advance health equity and access to community data
- ▶ Facilitate assessments and evaluations



Community Engagement

Community engagement plays a key role in shaping priorities, strengthening partnerships, and informing investment decisions.

By meeting people where they are and creating opportunities for connection, we make sure that community voice is reflected in our work. Through outreach, storytelling, and collaboration, MSHF builds relationships, elevates local perspectives, and supports community-driven solutions.



Key Activities

45+
organization partner meetings

12
tabling events

70+
one-on-one meetings with residents

10
community council meetings



Community Choice Health Summit

FEATURE STORY

Community-led Philanthropy

We hosted our first-ever Community Choice Health Summit, bringing together residents from Houston and Big Lake to identify local wellness initiatives and vote on the projects they believed would have the greatest impact in their communities.

At the conclusion of the summit, each community selected one project to receive \$25,000 in funding from MSHF, demonstrating how community voice directly informs investment decisions.

Big Lake

Big Lake received a \$25,000 grant that supports the development of Jordan Lake Park for all ages and abilities, including a trail and a fitness course around the park.

Houston

Locals voted to use their \$25,000 grant to plan a safe and easily accessible community facility for education, food, and connection that will cultivate a sense of belonging among residents.

“The Summit was excellent. This is the type of program that affects change - not just words, but action. Not just ideas, but investment.”

Cristian Hartley, HOUSTON FIRE CHIEF

”

Grants Awarded

Grantee Name	Awarded Amount	Number of Grants	Grantee Name	Awarded Amount	Number of Grants
Access Alaska, Inc.	\$22,425.00	1	Big Brothers Big Sisters of Alaska	\$49,575.00	1
Ak Payee Services Inc.	\$25,000.00	1	Big Lake Community Council	\$25,000.00	1
Alaska Addiction Rehabilitation Services	\$3,000,000.00	1	Big Lake Lions Foundation Inc	\$45,000.00	2
Alaska Association On Developmental Disabilities	\$37,800.00	1	Big Lake Neighborhood Closet	\$25,000.00	1
Alaska Bible College	\$25,000.00	1	Blood-N-Fire Ministry of Alaska	\$350,974.11	7
Alaska Center For The Blind And Visually Impaired	\$267,702.00	1	Boots to Waders	\$2,160.00	1
Alaska Children's Trust	\$71,400.00	3	Boys & Girls Clubs of Southcentral Alaska	\$325,000.00	3
Alaska Coalition on Housing and Homelessness	\$20,000.00	1	Brave Heart Maternity Home	\$4,900.00	1
Alaska Family Services	\$2,612,434.00	5	Burchell High School	\$2,500.00	1
Alaska Farmland Trust	\$49,418.00	1	Caring for Military Families: The Elizabeth Dole Foundation	\$24,079.00	1
Alaska Food Policy Council	\$25,000.00	1	Catholic Social Services	\$100,000.00	2
Alaska Humanities Forum	\$91,044.00	1	Challenge Alaska	\$3,795.00	1
Alaska Legal Services Corporation	\$100,000.00	1	Chickaloon Village Traditional Council	\$118,813.00	5
Alaska Pacific University	\$73,324.00	2	Choosing Our Roots	\$7,093.37	1
Alaska Professional Volunteers	\$25,000.00	1	Christ First United Methodist Church	\$19,030.00	1
Alaska Safe Riders	\$21,000.00	1	Christian Health Associates	\$300,000.00	1
Alaska Sports Hall Of Fame Inc	\$335,206.00	2	Christmas Friendship Dinner INC	\$32,100.00	2
Alaska String Camps, Inc	\$3,700.00	1	City of Houston	\$50,000.00	1
Alaska Veteran Sports, Inc	\$25,000.00	1	City of Palmer	\$500,000.00	1
Alaska Workforce Alliance (AKA Alaska Safety Alliance)	\$50,000.00	1	Coalition For Susitna Dam Alternatives DBA Susitna River Coalition	\$25,000.00	1
Alaska Youth And Family Network	\$68,250.00	2	Colony Middle School	\$3,470.00	1
Alaskan Aids Assistance Association	\$262,221.00	2	Cook Inlet Tribal Council, Inc.	\$12,000.00	1
Alaska's Healing Hearts	\$119,000.00	2	Denali Arts Council	\$92,770.00	3
Alzheimer's Resource of Alaska	\$25,000.00	1	Denali Education Center	\$45,700.00	2
American Cancer Society	\$25,000.00	1	Denali Family Services	\$57,300.00	2
American Diabetes Association	\$15,000.00	1	Family Promise	\$25,000.00	1
American Heart Association	\$294,337.00	1	Food Bank of Alaska	\$25,000.00	1
American National Red Cross	\$40,000.00	1	Friends of the Sutton Library	\$11,000.00	2
Armed Services YMCA of Alaska	\$25,000.00	1	Frontline Mission	\$85,000.00	3
Asthma & Allergy Foundation of America, Alaska Chapter	\$10,000.00	1	Gamers Sports Travel	\$25,000.00	1
Austin's Compassion Exchange Lending Closet	\$25,000.00	1	Girl Scouts Of Alaska	\$15,000.00	1
Battle Dawgs	\$25,000.00	1	Glacier View School PTO	\$800.00	1
Beacon Hill	\$18,000.00	2	Hatcher Pass Avalanche Center INC	\$272,450.00	1
Best Beginnings	\$60,000.00	1	HRT K9	\$11,839.00	1

Grantee Name	Awarded Amount	Number of Grants
Jessica Stevens Community Foundation	\$596,250.00	2
Keys To Life Alaska	\$5,000.00	1
Kids Kupboard	\$219,100.00	2
Knik Tribal Council	\$192,475.00	6
Kuugaq	\$13,000.00	1
Let Every Woman Know - Alaska	\$197,400.00	1
LINKS Mat-Su Parent Resource Center	\$1,602,751.00	7
Matanuska Community Farmers Market	\$152,473.00	1
Matanuska-Susitna Borough School District MSBSD	\$13,190.00	2
Mat-Su Amateur Hockey Association	\$4,388.00	1
Mat-Su Council on Aging	\$150,000.00	1
Mat-Su Food Bank	\$134,645.00	3
Mat-Su Health Services Inc	\$25,000.00	1
Matsu Jewish Center	\$28,500.00	2
MatSu Running Club	\$2,500.00	1
Mat-Su Services for Children and Adults	\$18,250.00	1
Mat-Su Ski and Snowboard Club, Inc	\$109,000.00	2
Mat-Su Ski Club	\$15,000.00	1
Mat-Su Youth Court	\$10,000.00	1
Me-2-We Inc.	\$25,000.00	1
Meadow Lakes Community Development Inc	\$15,000.00	1
Meadow Lakes Seniors, Inc.	\$3,100.00	1
Moose Boosters Wrestling Club	\$3,305.00	1
Museum Of Alaska Transportation and Industry Inc	\$6,710.00	1
MY House	\$66,079.00	3
Nine Star Enterprises Inc.	\$1,060,212.00	1
Northgate Alaska	\$150,000.00	2
Nudlaghi Leadership Institute	\$75,000.00	2
Onward & Upward, Inc.	\$1,228,430.00	3
Operation Iron Warrior	\$4,000.00	1
Palmer Arts Council	\$4,000.00	1
Palmer Church of God	\$60,000.00	2
Palmer Community Foundation	\$50,000.00	1
Palmer Fellowship United Methodist Church	\$25,000.00	1
Palmer Foodbank (Palmer Emergency Food & Community Services Inc)	\$50,000.00	1
Palmer High School	\$25,000.00	1
Palmer Junior Middle School	\$3,000.00	1

Grantee Name	Awarded Amount	Number of Grants
Palmer Senior Citizens Center Inc (aka Mat-Su Senior Services)	\$199,000.00	2
Peer Power	\$20,000.00	1
Philanthropy Northwest	\$10,000.00	1
PTA for Susitna Valley Jr./Sr. High School	\$23,000.00	1
REACH 907	\$44,000.00	3
Santa Cop & Heroes Program	\$25,000.00	1
Set Free Alaska, Inc.	\$30,750.00	2
Special Olympics Alaska	\$25,000.00	1
Standing Together Against Rape	\$1,610.00	1
Sunshine Community Health Center	\$543,975.00	5
Sunshine Station Child Care Center	\$43,500.00	2
Sunshine Transit	\$245,000.00	2
Talkeetna Community Radio Inc	\$300,000.00	1
Talkeetna Elementary PTA	\$22,570.00	1
Teeland Middle School	\$38,700.00	2
The Alaska FFA Foundation	\$20,000.00	1
The Foraker Group	\$100,000.00	1
The Queen's Guard	\$38,150.00	2
Trailhead Wesleyan Church	\$6,419.00	1
True North Recovery	\$250,000.00	1
United Way Mat-Su	\$277,500.00	5
University of Alaska Mat-Su	\$50,000.00	1
University of Alaska, Anchorage	\$74,786.00	1
Upper Susitna Food Pantry	\$238,027.00	2
Upper Susitna Seniors, Inc.	\$164,486.00	2
Valley Charities, Inc.	\$890,646.00	8
Valley Performing Arts	\$7,000.00	1
Valley Residential Services	\$442,440.00	2
Victory Ministries of Alaska	\$20,000.00	1
Warrior Soccer Booster Club	\$7,900.00	1
Wasilla Area Seniors, Inc. (WASI)	\$415,162.00	4
Wasilla High School	\$59,927.00	7
Wasilla Workforce Development Initiative	\$11,100.00	1
Wasilla Youth Soccer Association, Inc.	\$45,000.00	2
Willow Food Pantry, UMC	\$25,000.00	1
YMCA of Alaska, Young Men's Christian Association of Anchorage Alaska	\$15,000.00	1
Young Life	\$25,000.00	1
Youth Archive	\$6,820.00	1
Total Grantees: 143	\$21,689,835.48	238

Financials

Statement of Financial Position

Assets	2024	2025
Cash and Cash Equivalents	\$54,560,701	\$59,224,215
Long Term Investments	\$254,399,654	\$294,389,843
Land Property and Equipment	\$25,264,914	\$27,017,212
Investment in Joint Ventures	\$101,757,687	\$109,848,854
Total Assets	\$435,982,956	\$490,480,124
Liabilities & Equity		
Liabilities		
Accounts and Grants Payable	\$3,656,426	\$7,530,851
Payroll Liabilities	\$32,733	\$87,498
Other Current Liabilities	\$1,469,530	\$469,946
Long Term Liabilities	\$2,558,728	\$0
Total Liabilities	\$7,717,417	\$8,088,295
Total Net Assets	\$428,298,272	\$482,391,829
Total Liabilities & Equity	\$435,982,956	\$490,480,124

Statement of Activities and Changes in Net Assets

Revenue and Support	2024	2025
Equity Income in Joint Ventures	\$ 48,807,417	\$ 52,228,371
Investment Income, Net	\$ 25,085,383	\$ 41,351,212
Donations and other income	\$ 1,683,556	\$ 2,387,491
Total Income	\$ 75,576,356	\$ 95,967,074
Grants and Expenses		
Grants to Community Orgs	\$ 21,894,959	\$ 24,842,090
Scholarships	\$ 2,775,640	\$ 3,002,824
Programs and Capacity Building	\$ 5,938,444	\$ 6,754,901
General & Administrative Expenses	\$ 5,748,360	\$ 7,473,702
Total Expenses	\$ 36,357,403	\$ 42,073,517
Change in net assets	\$ 39,218,953	\$ 53,893,557
Net Assets Beginning of the Year	\$ 389,279,321	\$ 428,498,272
Net Assets End of the Year	\$ 428,498,274	\$ 482,391,829



Looking Ahead

As we envision a healthier future for the Mat-Su, we remain committed to investing in community-driven solutions that improve health and well-being across the region.

By continuing to strengthen partnerships, support local organizations, and respond to emerging needs, we are building on this year's progress to create lasting impact. 2026 will inevitably bring change, fresh perspectives, and creative solutions that address both the vital conditions and urgent needs of our community. With new executive leadership and a renewed sense of focus on long-term systems change, we are excited to cultivate the good things growing here.

Together with our partners and community members, we look forward to working toward a healthier, more connected Mat-Su today and in the future.


**GOOD THINGS
GROW HERE**





Mat-Su
HEALTH
FOUNDATION